

Start the Quest!

Begin in front of the Mary Todd Lincoln House, facing the street. Follow the rhyming direction clues to each site. Then read the information clues (in *italics*) and fill in the blanks.

Walk left from the front door to Jefferson, then, Cross Main, walk to Short, and cross over again. Take Short to the right past two streets till you see A dark metal sign to the right of a tree.

1.

*Mary was b_____ in a house on this spot,
Her grandma's house stood at the back of the lot.*

Continue on Short, past the church and Saunier, By the opera house, go with care across Broadway. Go nearly one block, then look left and stop By a big, white brick building with windows on top.

2.

*Mary wrote letters to those she held dear,
To mail them, she came to a p_____ office here.
Postage was based on the distance and pages,
Perhaps because mail had to travel on stages.*

Now walk to North Mill, cross there, and turn left, Head down Mill past Church Street and a church with some heft. Past the church, the brick house with a door on one side Was an office of one who was known nationwide.

3.

*Henry C_____, a Todd friend, practiced law in
this place,
And then ran three times in the president's race.*

Keep heading down Mill and cross Second Street Past the big gray stone building to a tree-filled retreat.

Then take the brick walk to the park's edge at Third To gaze at a place where degrees are conferred.

4.

*The building with columns reflects the Greek mania
In fashion when it was built for T_____.
The college was Robert Smith Todd's alma mater,
He passed on his fondness of books to his daughter.*

Go right to cross Market and walk down that street, Fine houses and gardens make this stroll a treat. Walk on; at Mechanic, keep heading on straight Till a corner house looms just beyond a black gate.

5.

*Its owner, Tom Bo_____, hired Todd as a clerk,
But Robert left law for more profitable work.
The Todd link to this house was in some ways dual,
One daughter and Mary were classmates in school.*

Cross Second and stop at the first house you see, Its red door is numbered one-hundred-ninety.

6.

*Though the Samuel Brown sign might imply not to
tarry,
A plaque on the right of the house mentions Mary.
For John W_____'s academy stood on this site,
It was here Mary learned to do math, read, and
write.*

Continue on Market, past a small parking lot, The brick building just beyond that's the next spot. A sign on the right of the building makes clear What nearly two centuries ago opened here.

7.

*McChord's c_____ had services rather than
masses,
The Todd kids attended its Sunday school classes.*

Continue on Market, cross Short Street, and stop By a big, gray stone building with a clock at the top.

8.

*To the right is Cheapside, where Robert Todd's store
Sold groceries, spices, fine liquors, and more.
This site was also the town's c_____ house
square,
Lexington's cruel slave market was there.*

Pass Cheapside on Short to return to Mill Street, Then look across it to your left a few feet.

9.

*A two-story building with windows on top
Was a place where folks who loved sweets liked to
s_____.
Baked treats and dances at this site drew Mary
To Monsieur Giron's famed confectionary.*

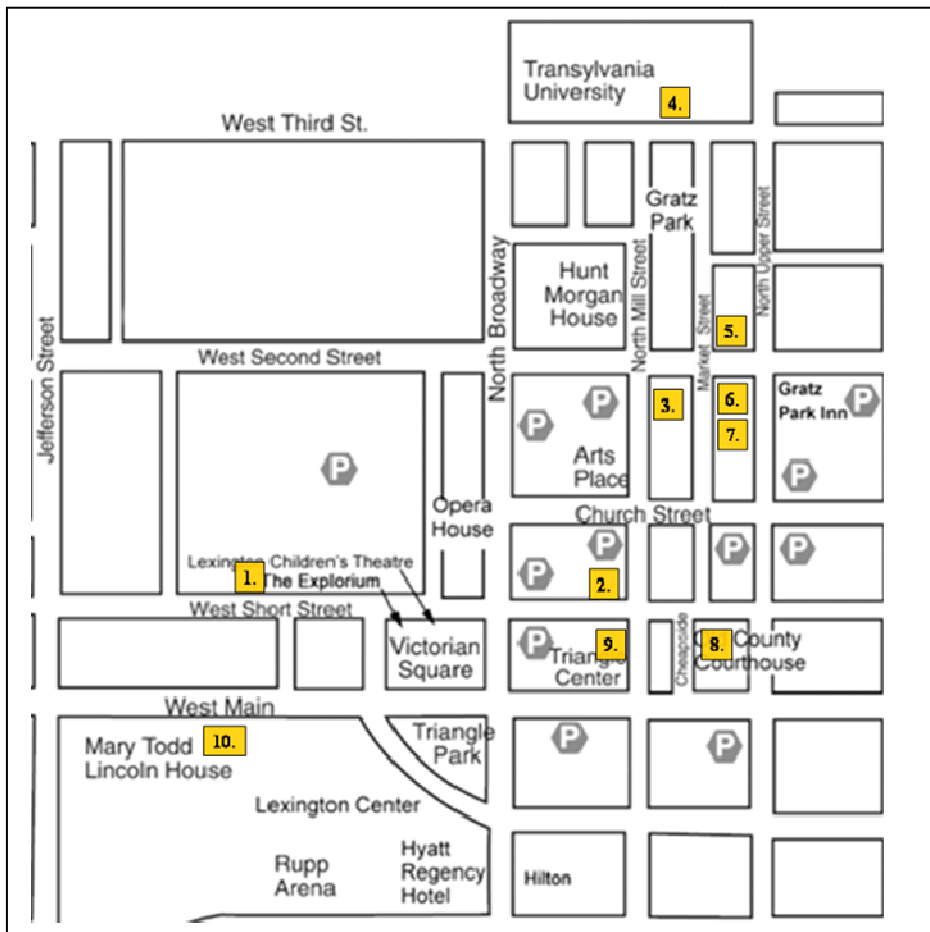
Take Mill past Giron's and turn right onto Main, Go one block to Broadway and cross it again. Continue up Main back to Jefferson, then Cross the street and return to the place you began.

10.

*In 1832 the T_____s moved to this place,
The family was growing and needed more space!
It's now a museum about Mary's life,
From a Lexington girl to a president's wife.
If the sign says it's open, come in for a tour
To learn about Mary, the Todds, and some more!*

Good job!

Come in during the museum's hours of operation to check your answers, get your quest stamped, and pick up a more detailed walking tour brochure.



Kentucky questing sites can be found across the commonwealth. To find one near you go to <http://kentuckyquesting.ky.gov>

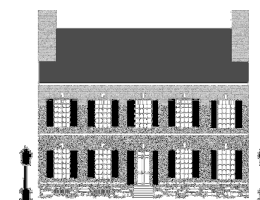
Mary Todd Lincoln's Downtown Lexington Quest

Approximate time of quest: 1 hour
 Type of trail: Paved walks and streets
 Difficulty level: Intermediate
 Type of quest: Historical

The Mary Todd Lincoln House is located at 578 West Main Street in downtown Lexington, Kentucky. Park for free behind the House or for a fee in a lot marked P. Public restrooms are available in Victorian Square.

The museum is open from 10 a.m. to 4 p.m. on Monday through Saturday from March 15 through November 30. Admission is \$9 for adults, \$4 for children 6 to 12, and free for children under 6. Call or check the website for discounts and group rates.

Stamp



Mary Todd Lincoln House
 578 West Main Street
 Lexington, KY 40508
 (859) 233-9999
www.mtlhouse.org