

The trail winds around until the stream is once again in sight.
 Now you have a sloping hill on your right.
 Look all around you-are you up high or down low?
 The pond in this bottom area is where all of the water will go.

Look for a place where people can play ball.
 A path to its left is our next call.
 Down to the wetland once again,
 Write down what you see on this end.

What do you think lives here? What do you see?
 Again, remember, can you list three?

- 1.
- 2.
- 3.

Where the boardwalks meet, make a right turn.
 There are a few more things for us to learn.
 Here's the last plunge pool that we'll spy.
 Notice all the plants that are growing nearby.

While it might look like someone has forgotten to mow,
 This area is called a riparian zone.
 These native plants stop the water for a while
 So it enters the pond in a fresher style.



Take the path to the left for one last boardwalk to explore.
 You can see many of the sites from before.
 It's also a great spot to look out on the watershed as a whole.
 Did you think to bring your fishing pole?

Remember our first stop after our journey began?
 Try to spot the plants in the drain again.
 Down below in the pond, a concrete pipe releases runoff from all about.
 The other two pipes usher water to its West Hickman route.

The Gainesway Pond is just one piece in a larger watershed,
 And the West Hickman Creek is where all this water will head.

That is why it's important to keep the wetland and pond clean.
 Eventually, all the pollution and dirt will be carried downstream.

Take a minute at this last place you stopped.
 I hope you brought a camera for this photo op!
 A picture reminder that shows very true,
 All the wonderful things nature can do.



Kentucky Questing sites can be found across the Commonwealth. Go to <http://eeinkentucky.org> to find one near you.

Gainesway Pond Quest

Sponsored by Bluegrass PRIDE

Approximate Time: 30 minutes

Difficulty: Easy and wheelchair accessible

Type and length of trail: Paved trail, less than one mile in length

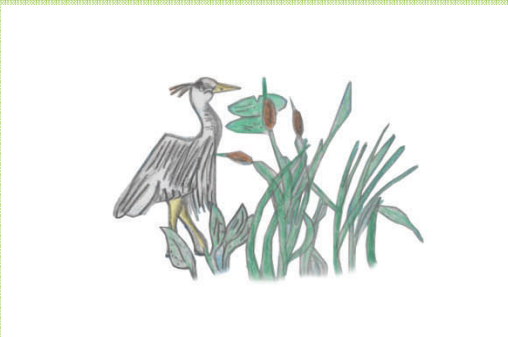
Type of Quest: Nature

Starting from Fayette County Courthouse, 330 East Main St Lexington, KY 40507...Ending at - Gainesway Parkway Shopping Center

- | | |
|---|---|
| <ol style="list-style-type: none"> 1. Start out going NORTHWEST on E MAIN ST/US-25 BR N/US-421 2. BR N/US-60 BR W toward ELM TREE LN. 0.0 mi 3. Turn LEFT onto ROSE ST. 0.1 mi 4. Turn LEFT onto E VINE ST/US-25 BR S/US-421 BR S/US-60 BR 0.2 mi 5. Turn RIGHT onto E MAIN ST/US-25 BR/US-421 BR. Continue to follow US-25 BR S/US-421 BR S. 1.4 mi | <ol style="list-style-type: none"> 6. Turn RIGHT onto CHINOE RD. 2.8 mi 7. CHINOE RD becomes GREENTREE RD. 0.4 mi 8. Turn LEFT onto CENTRE PKWY. 0.1 mi 9. Turn RIGHT to stay on CENTRE PKWY. 0.2 mi 10. Gainesway Pond is located to the right of the parking lot |
|---|---|



Gainesway Pond Quest



Our journey begins at the Gainesway Center parking lot, Concrete steps with black rails to the side of the pond is our starting spot. Climb the steps and turn to the right. You're on your way to our first quest site.

Follow the path a while until it curves around To a sidewalk on the right where a Filterra Unit storm drain can be found. Storm drains transport water from all around. Count them as you walk and see how many can be found.

With the pond behind you, look to the right, A storm drain and thirsty plants are in sight. Rainwater comes from the buildings and parking lot. The plants cause the water to slow down in this spot.

Back down to the path and head counter clockwise. A restored pond and wetland is laid out before your eyes.

Do you see the steps that lead to the pond's edge? Don't walk too quickly or you may miss the grasses and sedge. These steps that are made from slabs of rock Lead you directly to the water testing dock.

Look in the water. What do you see? Write down what you find until you have three.

- 1.
- 2.
- 3.

Head back on the path and take note of what grows, Then stop at the stones set in semi-circular rows.

Teachers and students can visit this place, It's an educational amphitheater to learn about the Gainesway Pond space.

This is a good time to stop and stare. You can think about what may be living here. To really see, you'll need to sit down. If you sit quietly, wildlife can be found.

What do you think lives here? What do you see? Just like before, try to list three.

- 1.
- 2.
- 3.

Move straight ahead to the boardwalk and follow it around. Different levels of water can be found. Continue along to where the boardwalks meet, You'll be standing with a weir beneath your feet.

A weir is a small dam that allows water to overflow. It helps the pond water to stay deep and the wetland water to stay low. To the right is the boardwalk that leads back to the trail, If you're moving toward the path from before you can't fail.

On your left is a can placed just for trash, So that we can make litter a thing of the past.

Litter is a type of people pollution. Using this can is a handy solution.

Follow the path where the trail makes a T, To the right is bench for you and me. At this point in our journey we're heading into new territory. To your left you will encounter the wetlands in all its glory.

Each wetland plant has a history and a role to play. They clean the water before it flows away. The plants remove suspended solids and nutrients, Then sends the clean water to the pond in a current.

Next is a tree that stands all alone. A natural spring makes the roots its home. It bubbles up here when it rains, But at other times, it's as dry as the plains.

To reduce runoff velocity there are plunge pools all around. On the right, below the fence, the first one can be found. Two more plunge pools will soon be in view. It will take a while before the last one is presented to you.

As you walk you'll notice the wetlands form from a stream. With many plants to help keep the water clean. There's native cane on either side. In Kentucky, this once grew far and wide.

As you head up the path, look to both sides. You'll see two more plunge pools, they're not easy to hide. Around the bend, look down to the right. You will encounter a most curious sight.

A small concrete structure with chambers of three, This is a pollutant trap to catch sediment and debris. A Suntree Unit is its name. Reducing pollution is its claim to fame.